



Wigan & Leigh Hospice

Fundraising Pack

Help raise vital funds for your local Hospice

Registered charity 513400

Team Hospice



Georgia raised money sky diving in Dubai!



You're about to do something amazing.

The services Wigan & Leigh Hospice provides are free to our patients, but are not without cost. We must raise £12,000 a day to keep the hospice running, we do this with the help from our amazing community fundraisers, through donations, our lottery and shops.

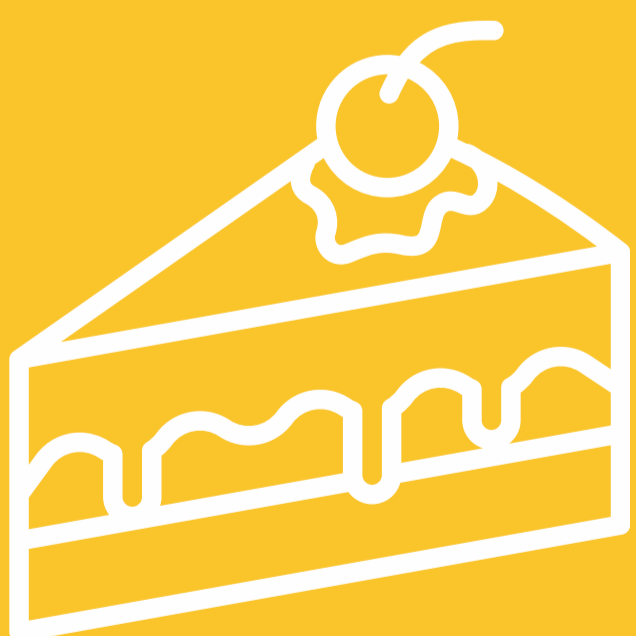
We care for over 1,200 people every year, both at home and in our 14-bed inpatient unit. We want to make sure everyone living in Wigan and Leigh gets access to the best possible care wherever and whenever they need it.

That's why you're so important to us. It's why we think you're amazing. In this pack, you'll find inspiring stories, advice on how to tell the world about what you're doing, and all sorts of hints and tips that will make your fundraising really take off.

Thank you so much for joining us. Not only will you have loads of fun, every penny you raise will help patients and their loved ones receive the best care possible.

Not sure what to do?

Host a bake sale



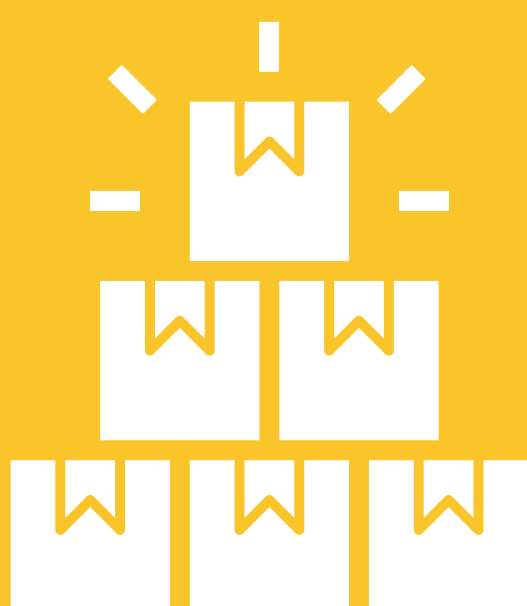
Climb a mountain



Challenge yourself



Sell your homemade goods



Organise a group dog walk



Tips for setting up an event



Think about your event

Where will you host your event?

Who are you trying to attract to your event?

What are you hoping to achieve?

How will you raise funds?

Is it an event with tickets or free entry?

Will you do a raffle or tombola?

We can provide you with advice and fundraising materials to help you make your event as successful as possible. Here are a few resources you have access to, simply ask the team for support:

- Collection buckets and boxes
- Branded Wigan & Leigh Hospice T-Shirts and vests
- Pop-up banners
- Raffle books
- Sponsorship Forms
- Official Wigan & Leigh Hospice logo



01942 524 203



fundraising@wlh.org.uk

Spread the word

The power of social media

Social media is an incredible way to share your fundraising and gain the support you need. Regular updates will help friends, family and colleagues know more about how you're getting on. It will also give people opportunities to donate and get involved with your fundraiser, and to really understand why you're supporting Wigan & Leigh Hospice. The more people who get involved, the more fun you'll have!

It's easy to find us on social media, so why not involve us in your posts? You can tag us in photos or mention us in updates. Just include one of the accounts listed below.



wiganandleighhospice



wiganleighhospice



@WL_Hospice



wigan-&-leigh-hospice

Front page news

Local papers love fun, uplifting fundraising stories. All you need to do is get in touch and tell them about yours. It's easy, simply find the contact for their news desk (you can find this online, or by calling Directory Enquiries) and give them a call! Tell them about the fun you're having, the money you're raising and the photos you've been taking. You could either try to get them to cover your fundraising efforts before they happen, or after once you know how much money you've raised.

Caitlin's story

"Until January, I was fortunate enough to not have had any need to know about the huge support the hospice offers in times of desperate need. This changed however when my mum became increasingly unwell in the last months of her life.

Without Wigan and Leigh Hospice, what was a dark and difficult time for my family would have seemed even less surmountable."

Despite not being a runner, Caitlin ran the Manchester Half Marathon for us in October 2023 and raised £1,255.



How to handle your donations

Just Giving

Setting up a Just Giving page is a quick and easy way to raise money. You can either set up your own page and then select Wigan & Leigh Hospice as your chosen charity. Or, go to www.justgiving.com/wiganandleighhospice and click the "Fundraise for us" button in the top right. Add some info about why you're fundraising and now you're ready to start sharing! Don't forget to share your page on all of your social media to get more donations.

Sponsorship Form

Ask family, friends, and colleagues to sponsor you through your sponsorship forms to increase donations. Contact the fundraising team or download the forms from www.wlh.org.uk/support-us/fundraise-for-us/

Collection boxes

These are an easy way for people to donate their spare change or notes and are perfect if you are hosting an event. Please contact the fundraising team who will provide you with as many buckets as you need.



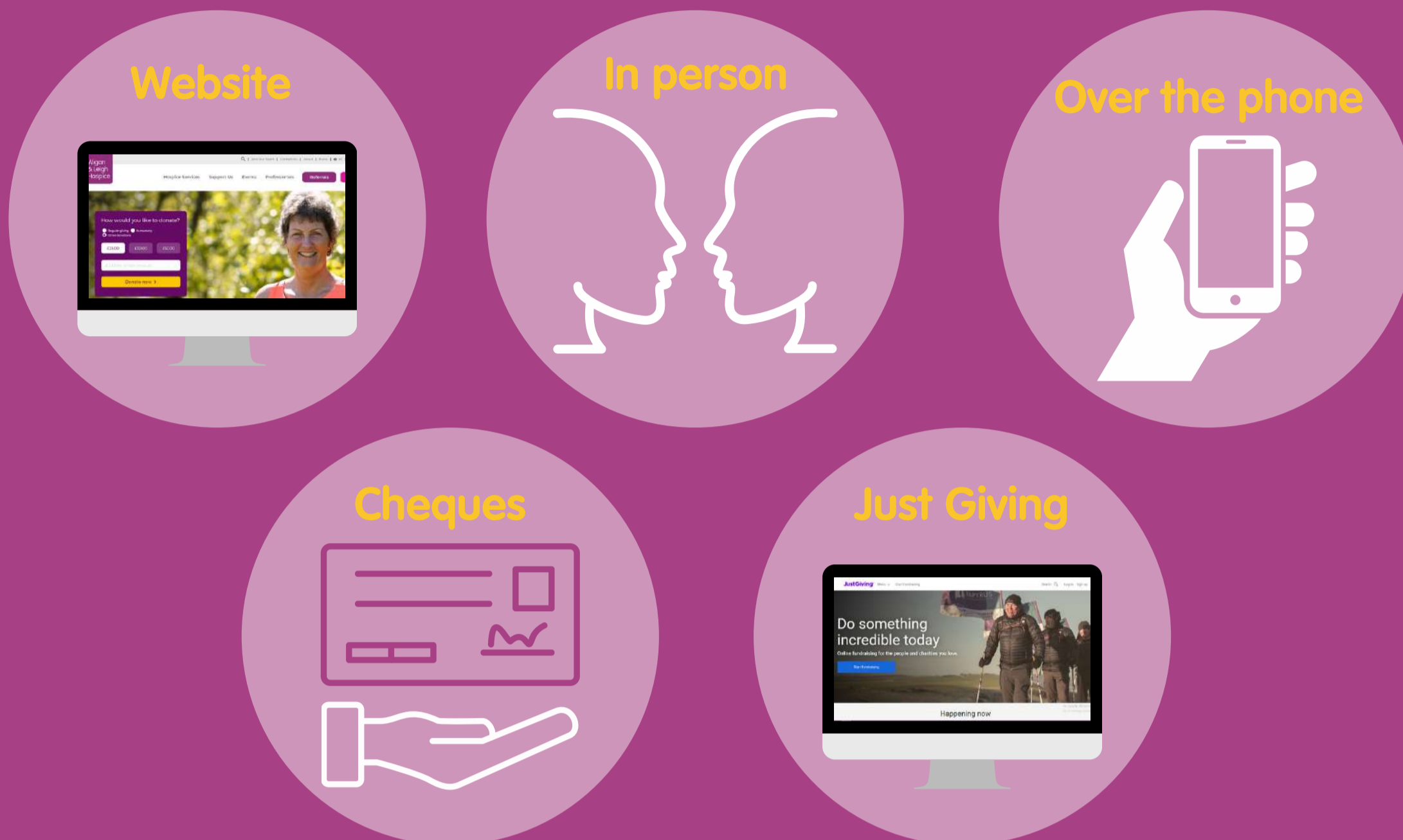
Gift Aid



If your supporters are UK taxpayers, they can increase the value of their donations by 25% at no extra cost! This really makes a big difference, so please make sure your UK tax-paying donors fill in their details on your sponsorship form or select yes to Gift Aid on their Just Giving donation.

How to send in your final donations

There are many ways to send us your donations. It's up to you which one you choose:



If you need help, just contact the Fundraising team who will be happy to offer their assistance.

Legal bits and other stuff

Fundraising should be fun, but it's important that everything is safe and legal, for everyone involved.

Permission

If you're holding an event in a public place, you must get permission first, either from the local authority or the property owner.

Fundraising with food

To keep everyone safe, check Food Standards Agency guidelines on preparing, handling, cooking and storing food at [food.gov.uk](https://www.food.gov.uk)

Complaints

On the rare occasion that someone would like to make a complaint, these must be emailed to fundraising@wlh.org.uk or call **01942 524 203**

Photos

If you plan to take photos of other people at your fundraiser, please make attendees aware. It's good to let them know if you plan to use their photo, that way they can tell you if they are happy for you to do so.

Under 18s

If you're aged under 18, you'll need to get permission from a parent or guardian to raise money for Wigan & Leigh Hospice.

EVENTS



RUNNING EVENTS

Taking part in a running event? Why not raise money for Wigan & Leigh Hospice by selecting us as your charity of choice.

HOSPICE FAIRS

Join us at our annual community fairs, including our popular Garden Party in summer and New Years Fair in January.

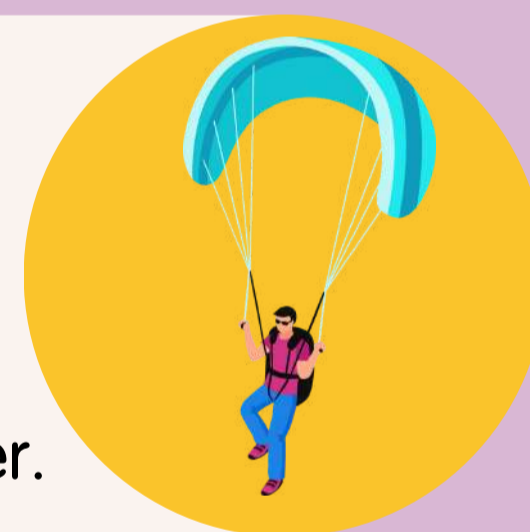


THE WIGAN PUB WALK

Dig out your walking boots and join us for a fundraising walk around Wigan – supported by local pubs.

SKY DIVES

Jump from a plane soaring at 12,000 or 15,000 feet above the Lancashire countryside! Our sky dives take place in June and September.



BIKE RIDES

Join thousands of other cyclists in the Manchester to Blackpool Bike Ride! This 60 mile route takes place every July.

Find out more about our events by scanning the QR code or visit our website: www.wlh.org.uk



Registered with
**FUNDRAISING
REGULATOR**



Kildare Street, Hindley, Wigan, WN2 3HZ

Tel: 01942 525 566

Registered Charity, number 513400